



VILLAGE ESTATES

• EST.1993 •



93 Main Road, Sidcup, Kent DA14 6ND

Tel: 0208 302 1002

www.village-estates.com

Email: sidcup@village-estates.com



TWO CAR DRIVEWAY

SHORT WALK TO 'OVAL SHOPS'

ORANGERY ROOM

GROUND FLOOR CLOAKROOM

TWO STOREY REAR EXTENSION

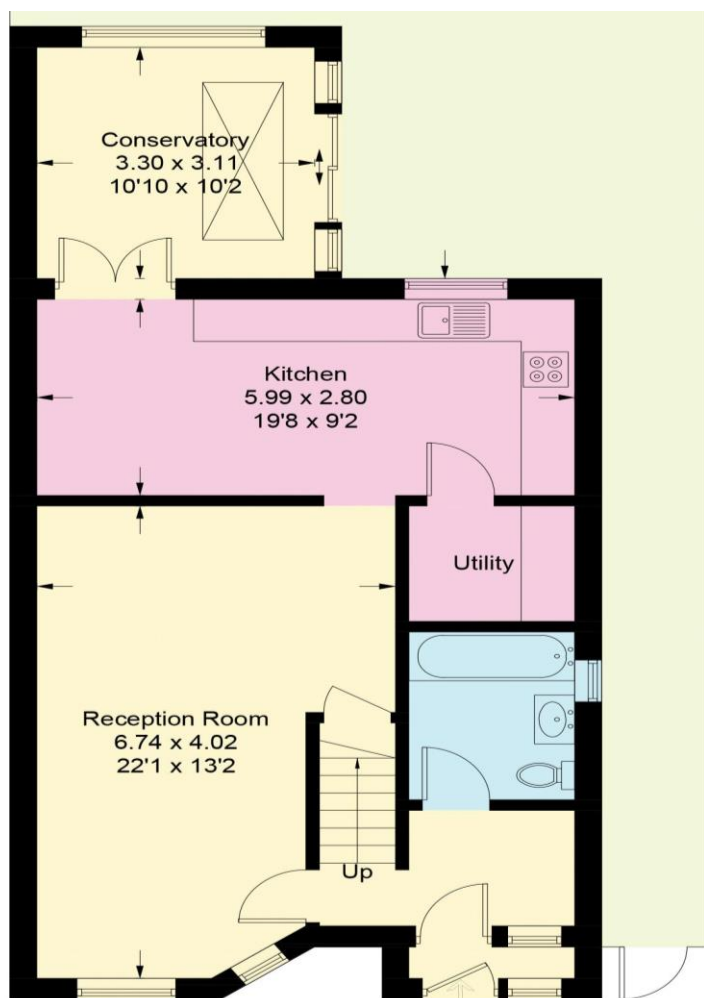
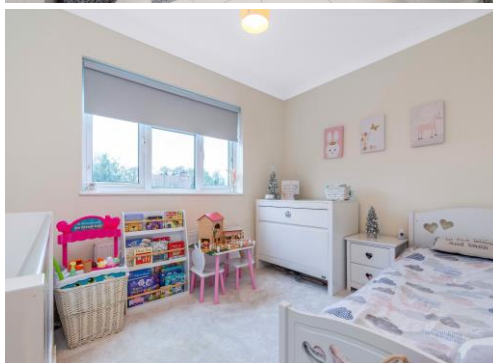
SIDCUP MAINLINE STATION



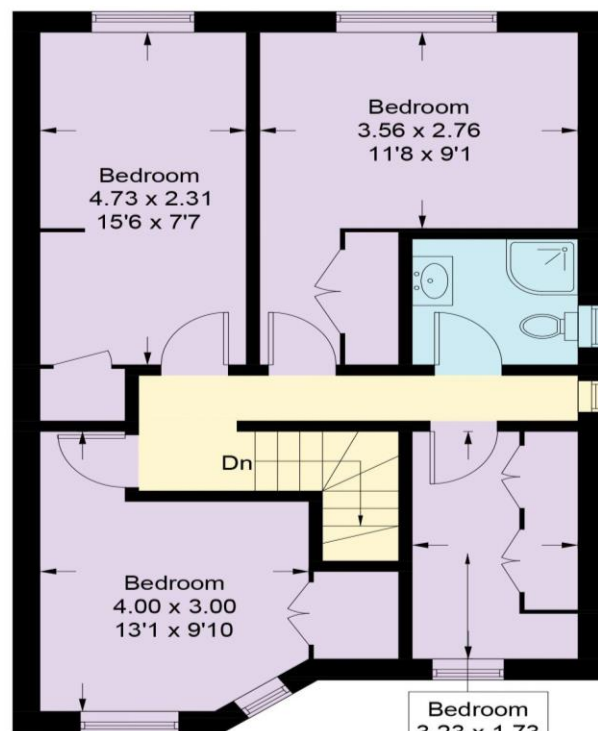
91 Willersley Avenue
Sidcup, DA15 9EG

Guide Price £625,000-£650,000

Village Estates present a 1930s four bedroom semi-detached family home that has been vastly extended to provide a substantial family home with a modern floorplan. Located in a popular residential area surrounded by well-regarded primary and secondary schools, a number of local parks and within walking



Ground Floor



First Floor

CURRENT ENERGY EFFICIENCY RATING 'D'

CONSUMER PROTECTION FROM UNFAIR TRADING REGULATIONS 2008

Please note that any services, heating system or appliances have not been tested, and no warranty can be given or implied as to their working order. You are advised to obtain verification from your solicitor or surveyor. References to the tenure of a property are based on information supplied by the seller. We have not had sight of the title documents and a buyer is advised to obtain verification from their solicitor. Items shown in photographs are not included unless specifically mentioned within the sales particulars, but may be available by separate negotiation. Whilst every attempt has been made to ensure the accuracy of the floor plan contained here, measurements of doors, windows, rooms and any other items are approximate and no responsibility is taken for any error, omission, or mis-statement. We advise you to book an appointment to view before embarking on any journey to see a property, and check its availability. The accuracy of these details are not guaranteed and they do not form part of the contract.